



SCHOOL OF LAW

ESTABLISHED IN THE PUBLIC INTEREST... SERVING THE PUBLIC GOOD

The Southern Illinois University School of Law's mission to serve the public good began in 1973, when it was established by the Illinois state legislature.

Southern Illinois University School of Law
Office of Admissions and Financial Aid
1209 W. Chautauqua/MC 6811
Carbondale, IL 62901
www.law.siu.edu
Phone: 800/739.9187, ext. 1
Direct: 618/453.8858
Fax: 618/453.8921

Located in beautiful southern Illinois, the city of Carbondale is a community of 27,000 residents, and home to the Southern Illinois University School of Law. With one of the nation's best student-to-faculty ratios, commitment to providing the highest quality legal education, along with a graduating law student debt that is far less than the national average, the SIU School of Law is considered one of Illinois' "Best kept secrets."



- Tuition for in-state residents is \$11,022 for the 2009-2010 academic year.
- Over one-half of our students received a scholarship or award in 2008-2009.
- Generally, in-state residency classification (for tuition assessment purposes) is available for non-resident students after six months. ‡
- The School of Law is fully accredited by the ABA and the AALS.
- Southern Illinois is a region rich in recreational opportunities; students have the added benefit of attending law school in an area adjacent to national forests and state parks, making access to hiking, kayaking, biking, horseback riding and camping only minutes away from campus. The growing "Wine Trail" adds vineyards and orchards, with wine tasting and live music, to the campus and community theatre, arts, music and entertainment scenes.
- Carbondale's quality of life is among the highest in small cities in Illinois while remaining below the national law school average for cost-of-living expenses. The School of Law is part of the Southern Illinois University system, with a tradition of over 130 years of educational excellence, serving a diverse, multicultural student body.

Actual Cost of Attendance/Student Budget for the 2009-2010 academic year (Fall 2009 entry):

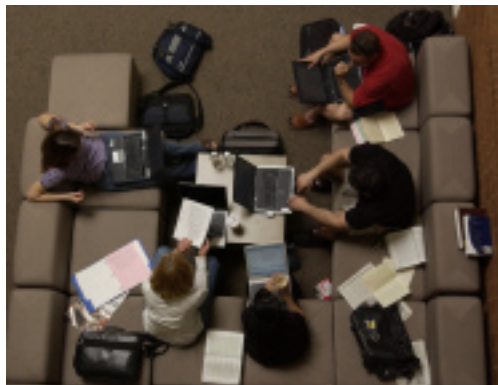
	Illinois Resident	Non-Illinois Resident
Tuition ‡	\$11,022	\$29,925 ‡
Fees	\$3,115	\$ 3,115
Room & Board Allowance	\$10,458	\$10,458
Book & Supplies Allowance	\$1,150	\$1,150
Miscellaneous	\$2,520	\$2,520
Academic Year Total:	\$28,265	\$47,168

‡ Southern Illinois University at Carbondale is a state-supported institution. Although our non-resident tuition rate is much lower than that of most private schools, it is considerably higher than the resident tuition rate. However, our policy permits students to change their classification status from non-resident to Illinois resident.

Non-Illinois residents are eligible to receive in-state tuition after six months of Illinois residency. For more information, please refer to the **In-State Residency Requirement** link on our website, www.law.siu.edu/admissions.asp.

Programs of Study

Southern Illinois University School of Law offers a full-time program of study leading to the J.D. A variety of concurrent degree programs are available that allow students to receive their M.D., Ph.D., or Master's degree while pursuing a law degree. A Master of Legal Studies and Master of Laws are also available.



- J.D./Doctor of Medicine
- J.D./Doctor of Political Science
- J.D./Masters of Accountancy
- J.D./Masters of Business Administration
- J.D./Masters of Education
- J.D./Masters of Electrical and Computer Engineering
- J.D./Masters of Public Administration
- J.D./Masters of Social Work

Statistics (Entering Class Fall 2009)

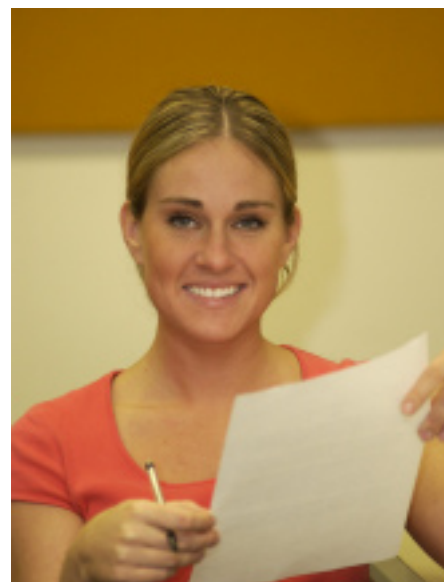
Matriculated students in the Class of 2012 represent 16 states and 58 universities.

- Applications received: 753
- Admitted: 362
- Matriculated applicants: 138
- Matriculated LSAT percentiles: 157/153/151
- Matriculated UGPA percentiles: 3.52/3.25/3.01
- Matriculated female applicants: 40%
- Matriculated applicants-of-color: 10%

Admissions

Southern Illinois University School of Law is a full-time program with fall semester entry only. Apply on-line through LSAC at www.lsac.org. Our school has rolling admissions with a preferred deadline of March 1. Submit the following with an application:

- \$50 application fee
- Resume
- Two letters of recommendation
- Memorandum to the Admissions Committee
- LSDAS report to include LSAT score, with highest score used for admissions purposes.



Bar Passage

Southern Illinois University School of Law was among the first law schools in the nation to create and offer additional bar exam preparation, including workshops and simulated essay exams. The specialized eight-week, no-cost program provides academic support for all Southern Illinois University School of Law graduates preparing to take the bar exam. The program runs concurrently with the commercially(for profit) bar review course.

- 87% pass rate for all SIU School of Law graduates taking the February 2009 test for the first time (Illinois state average approximately 84%).
 - 94% pass rate for all SIU School of Law graduates taking the July 2008 test for the first time (Illinois state average approximately 92%).
- July 2009 pass rates will be available in November 2009.

Employment (Class of 2009)

Sixty-two percent of graduates are employed in small firms (2-10 lawyers).

Areas:

Academic	3.5%	Business	14.0%
Judicial Clerk	2.3%	Private Practice	46.5%
Government	26.7%	Public Interest	7.0%

Location: In-State	69.0%	Out of State	31.0%
--------------------	-------	--------------	-------

